



Meeting Agenda
Tuesday, June 7, 2016
1:00pm-2:30pm
New Location: La Quinta Inn and Suites – Boise Town Square
7965 Emerald St. Boise, ID. 83704
Call In Option: 1-855-291-0679

Next Meeting: Tuesday, July 5, 2016 1:00-2:30pm

Mission: To organize healthcare stakeholders by providing a structured forum for sharing valuable knowledge, finding common solutions, and identifying resources to improve health outcomes, improve quality and patient experience of care, and to lower costs of care in the region.

Agenda Item	Outcome	Process	Person
Health IT Update 1:00-1:30	Improve knowledge Health IT status, IHDE connectivity, data reporting	Presentation	Burke Jensen
Available Data/Sources for CHC 1:30-1:50	Identify sharable data sources CHC members have	Discussion	Gina Pannell Kevin Rich
ER/SHIP Cohort communication 1:50-2:00	Identify and address barriers, next steps	Discussion/Update	Megan Stright Dr. Watts Gina Pannell
Opportunity Prioritization 2:00-2:25	Identify options for support	Roundtable - Member-driven input into opportunities for support, capabilities,	All
Wrap-Up 2:25-2:30	Identify CHC member assignments/tasks	Action Item Review	Gina Pannell



Statewide **Healthcare**
Innovation Plan

Health IT Update

June 2016

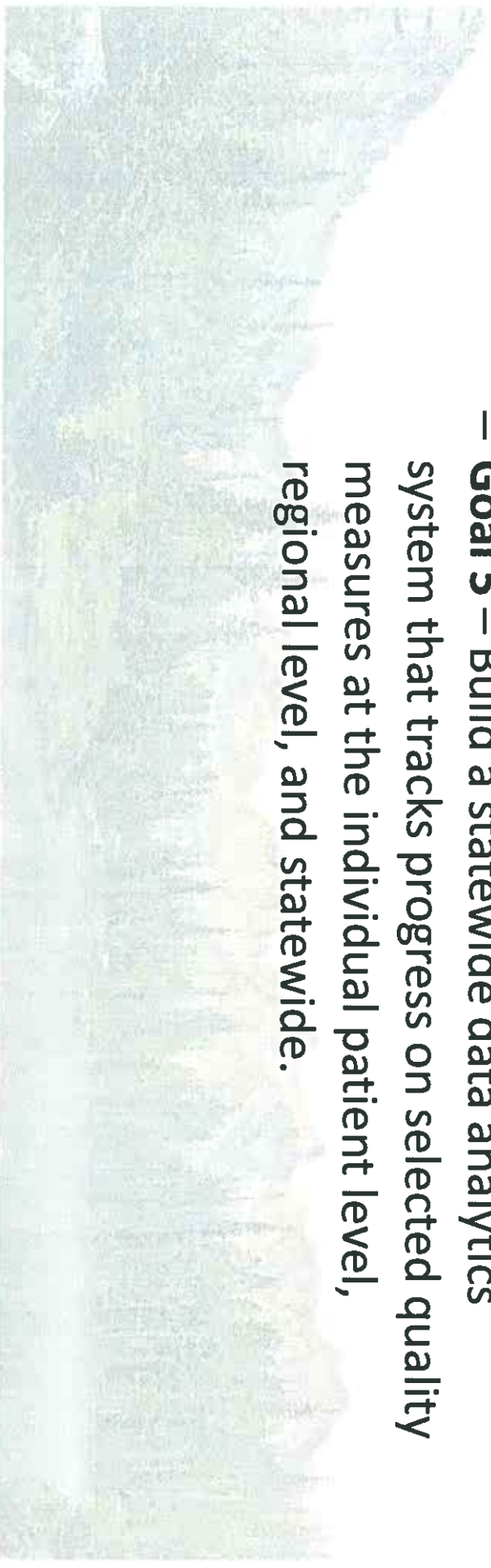


Overview of Health Information Technology Plan



Health IT Goals

- 2 of the 7 SHIP goals are Health IT focused
 - **Goal 2** – Improve care coordination through the use of electronic health records (EHRs) and health data connections among PCMHs and across the medical neighborhood.
 - **Goal 5** – Build a statewide data analytics system that tracks progress on selected quality measures at the individual patient level, regional level, and statewide.



Our Health IT Contractors

- **Idaho Health Data Exchange (IHDE)** – IHDE is our health information exchange partner.
- **HealthTech Solutions** – HealthTech is our data analytics partner. They are establishing a connection with IHDE and are responsible for developing and providing clinical quality measure reporting.

SHIP Health IT Goals

End of Grant Year Targets

Clinical Quality Measures	Clinics Reporting for Year 1 (By Jan 31, 2017)	Clinics Reporting for Year 2 (By Jan 31, 2018)	Clinics Reporting for Year 3 (By Jan 31, 2019)
Measures 1-4	55 Clinics	110 Clinics	165 Clinics
Measures 5-10	N/A	55 Clinics*	110 Clinics**
Measures 11-16	N/A	N/A	55 Clinics***

* Optional for Cohort 2 clinics but required for Cohort 1 clinics

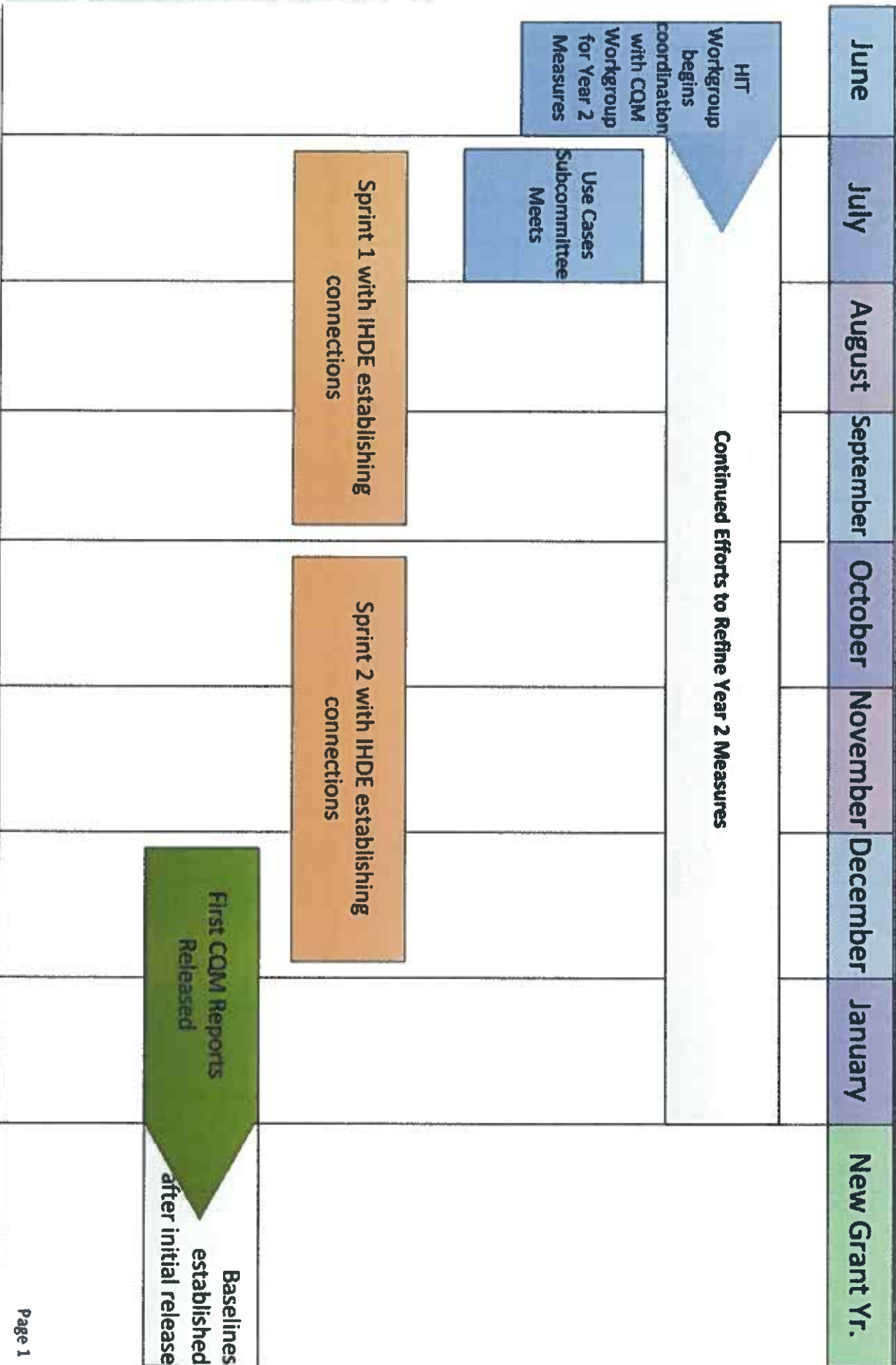
** Optional for Cohort 3 clinics but required for Cohort 1 & 2 clinics

*** Optional for Cohort 2 and 3 clinics but required for Cohort 1 clinics

This clarification of goals / targets needs to be approved by CMMI

Anticipated Health IT Timelines

(IHDE Connections and CQM Reporting timelines tied to the end of the grant year -- Jan. 31st)



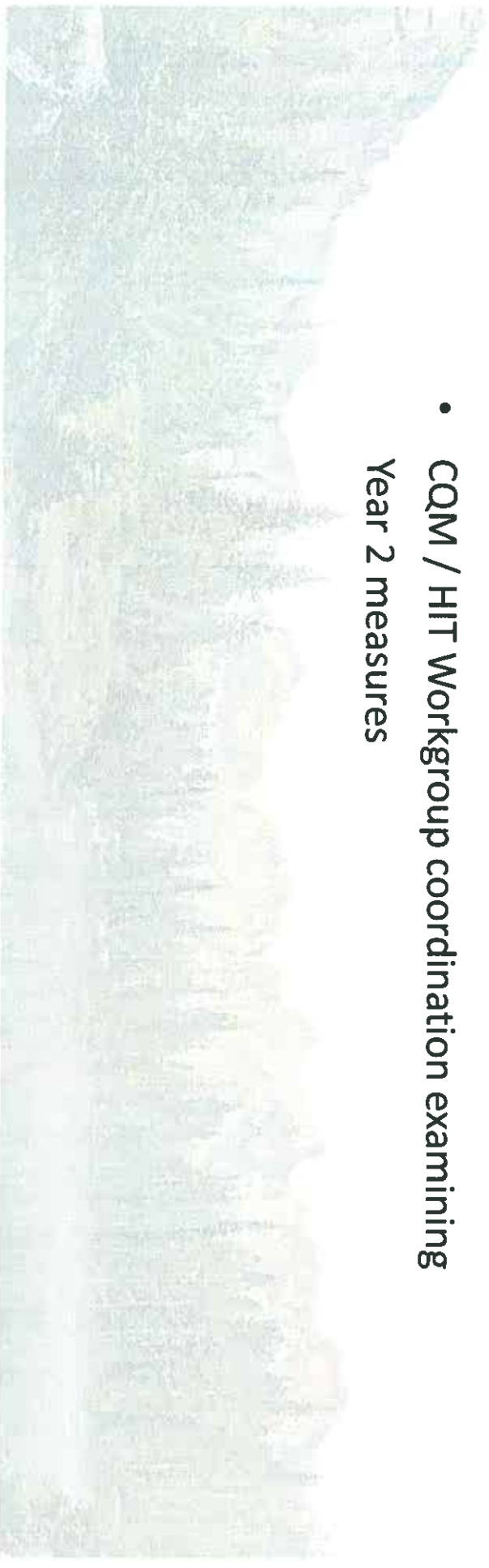


Recent Activities and Next Steps



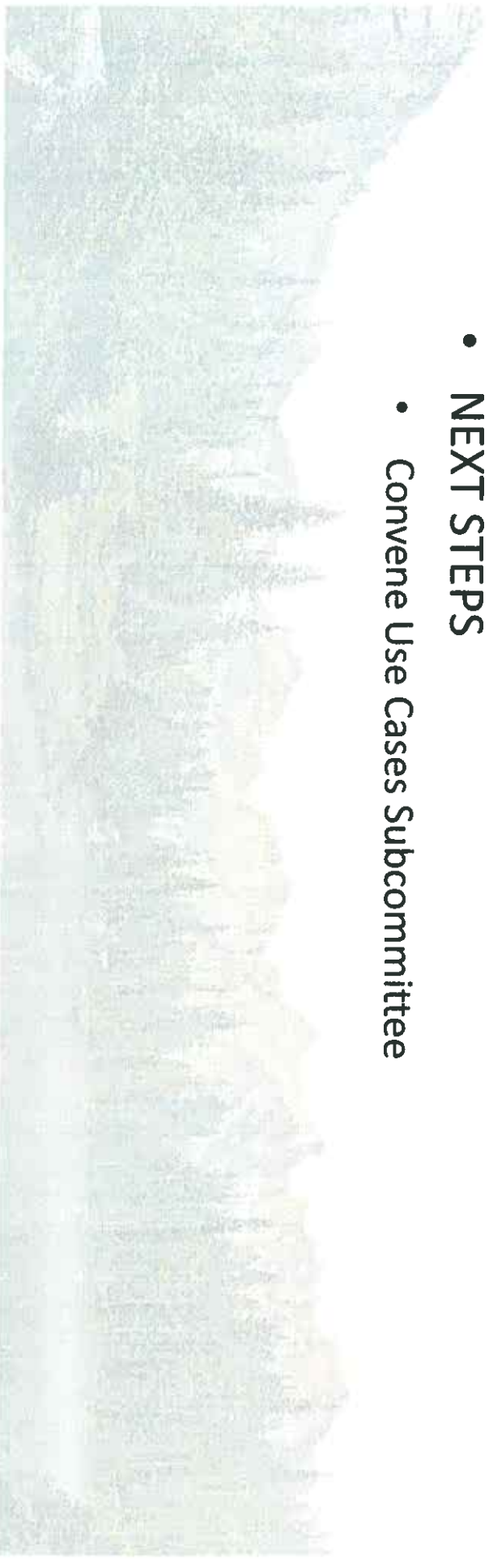
Health IT Workgroup Activities

- Data Element Mapping Subcommittee
 - First 4 measures – redefined
 - Discussions for Year 2 measures with HIT Workgroup
 - Coordination with CQM Workgroup
- **NEXT STEPS**
 - CQM / HIT Workgroup coordination examining Year 2 measures



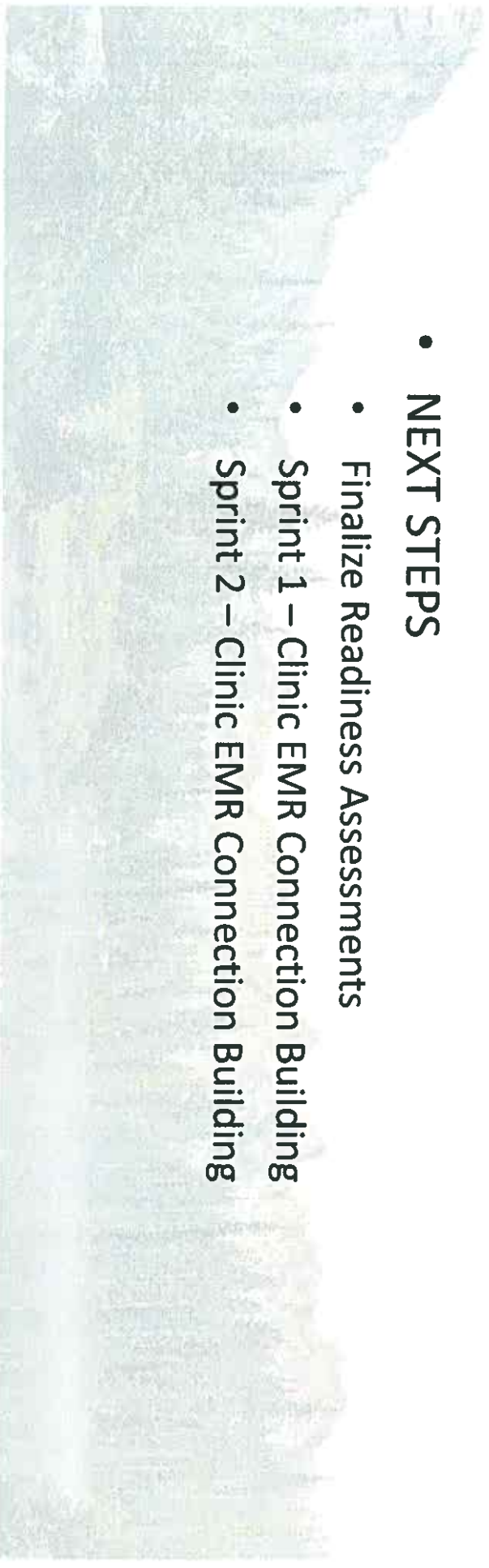
Health IT Workgroup Activities

- Use Cases Subcommittee
 - Will help define how specific users will use the data analytics tool from HealthTech
 - Will define needed supplemental data points and report architecture
- **NEXT STEPS**
 - Convene Use Cases Subcommittee

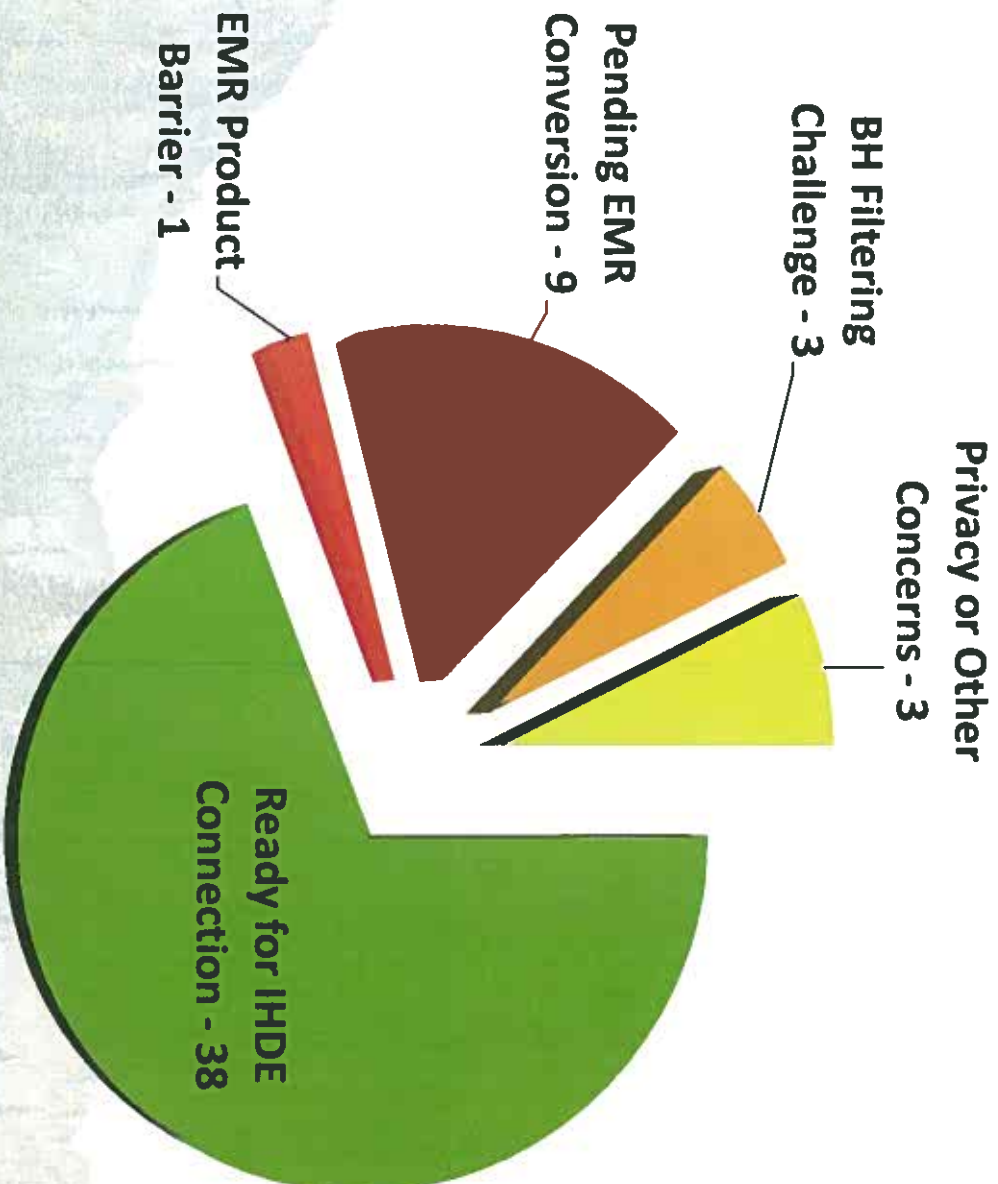


IHDE Clinic EMR Connection Building

- Readiness Assessments
 - Cohort 1 Clinic Readiness Report
 - Resolution Plan
 - Lessons Learned
- Privacy Review for data sharing with HealthTech
- **NEXT STEPS**
 - Finalize Readiness Assessments
 - Sprint 1 – Clinic EMR Connection Building
 - Sprint 2 – Clinic EMR Connection Building



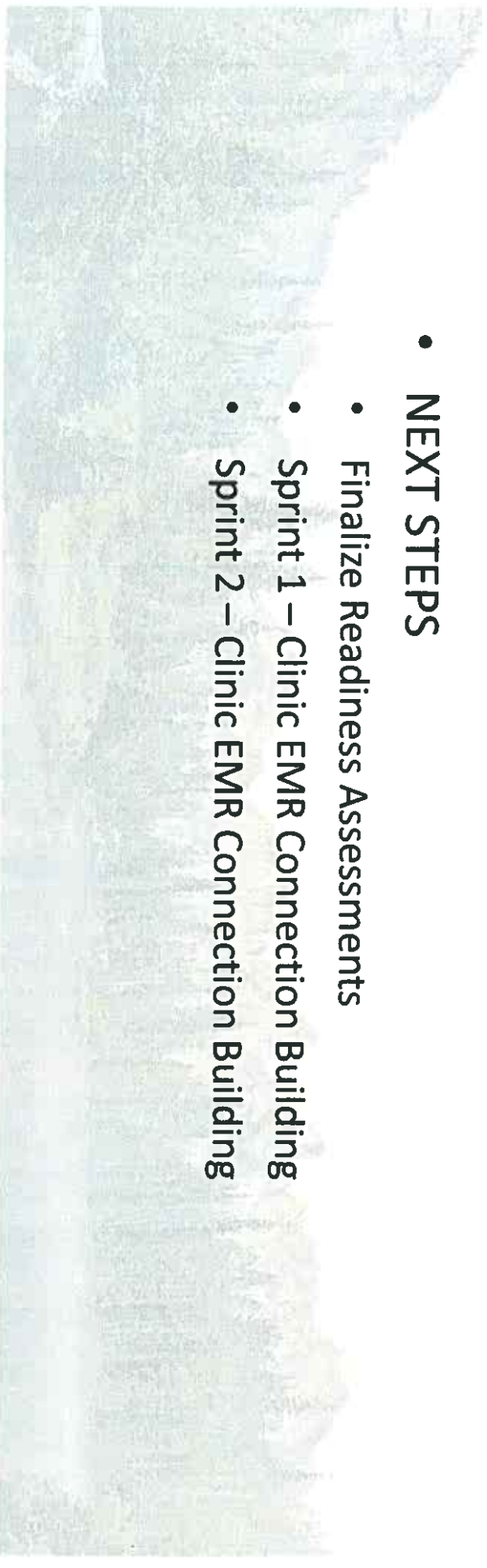
Clinic IHDE Readiness Assessments



- Ready for IHDE Connection - 38
- EMR Product Barrier - 1
- Pending EMR Conversion - 9
- BH Filtering Challenge - 3
- Privacy or Other Concerns - 3

IHDE Clinic EMR Connection Building

- Readiness Assessments
 - Cohort 1 Clinic Readiness Report
 - Resolution Plan
 - Lessons Learned
- Privacy Review for data sharing with HealthTech
- **NEXT STEPS**
 - Finalize Readiness Assessments
 - Sprint 1 – Clinic EMR Connection Building
 - Sprint 2 – Clinic EMR Connection Building



Clinical Quality Measure Reporting

- HealthTech server infrastructure and configuration set up for the HealthTech Test Environment
- Defining a data transport method for CQM data
- **NEXT STEPS**
 - Fast Track a set of sample data from select clinics to begin development of report calculation engine (data extract, transform, loading)





Questions

